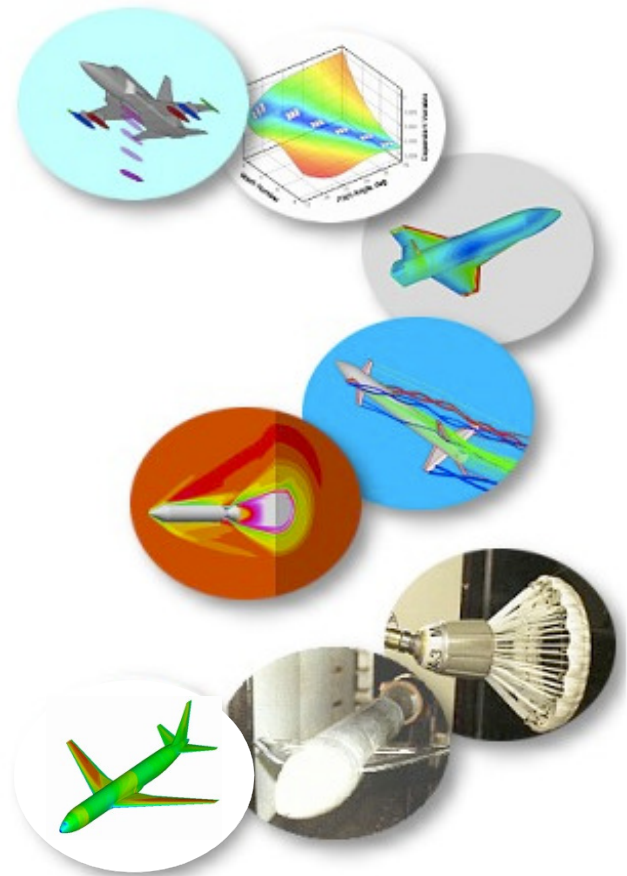




*Nielsen Engineering  
& Research, Inc.*

## Consulting, Analysis, Research, Design, and Development



900 Lafayette St., Suite 600, Santa Clara, CA, 95050  
408-727-9457; [info@nearinc.com](mailto:info@nearinc.com); [www.nearinc.com](http://www.nearinc.com)

Copyright © 2014, Nielsen Engineering & Research, Inc.



*Nielsen Engineering  
& Research, Inc.*



### ***Company Profile***

Since 1966, Nielsen Engineering & Research (NEAR) has been providing its customers with analysis, research, design, and development services in the areas of fluid mechanics, aerodynamics, hydrodynamics, flow-related sensors, and aerodynamic hardware solutions. NEAR's staff of highly competent engineers and scientists offer a unique combination of depth and breadth of knowledge, generating innovative and effective solutions in a cost- and time-efficient manner. Analytical services are available to customers who require data for evaluating new ideas, for supporting wind tunnel and flight tests, and for FAA certification efforts. In addition, NEAR's research, design, and development resources satisfy the needs of customers who require assistance with the creation of new products or the enhancement of existing systems or processes.

To accomplish these objectives, NEAR offers 1) a range of aero/hydrodynamic analysis tools including computational fluid dynamics, engineering level numerical methods, and custom-designed analytical software, 2) laboratory and wind tunnel testing, 3) hardware development and evaluation, and 4) a knowledgeable and dedicated staff with the experience to know which tool or combination of tools is the most applicable and effective for a given situation.

### ***Mission Statement***

NEAR's mission is to work with our current and future customers to develop data, hardware, and/or intellectual property that will provide them with a competitive advantage for years to come. NEAR is guided by the sense of excellence, integrity, and ethics that has allowed us to maintain the trust of our customers, gained through more than forty years of service to large and small companies in all areas of technical endeavor.



*Nielsen Engineering  
& Research, Inc.*

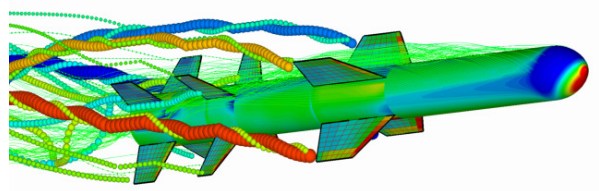
## ***Core Competencies***

*NEAR specializes in providing analysis, research, design, and development services in the following areas:*

- **Aerodynamic Design and Analysis**
- **Advanced Computational Fluid Dynamics**
- **Knowledge Management Systems**
- **Reduced-Order Modeling**
- **Flow-Related Sensors**
- **Aerodynamic Hardware Solutions**

### **Aerodynamic Design and Analysis**

NEAR provides all levels of aerodynamic design and analysis ranging from basic engineering methods to advanced CFD calculations. These tools, coupled with NEAR's capabilities for analyzing complex fluid phenomena, are applied to customers' problems to achieve accurate and efficient solutions. Practical project experience in both analytical and experimental aerodynamic techniques is the basis for NEAR's excellent reputation for delivering results for commercial programs.



### **Advanced Computational Fluid Dynamics**

NEAR develops advanced CFD technology, including high-accuracy methods, and techniques for rapid estimation of error and uncertainty in CFD results. Complex CFD software development and design optimization are also addressed.

### **Knowledge Management Systems**

NEAR has a wide range of experience in developing knowledge management systems for the purpose of preserving corporate memory, lessons learned and best practices for high technology aerospace disciplines. These integrated systems provide companies with a means to preserve and maintain their valuable, hard-earned knowledge and experience for continued use in the future.



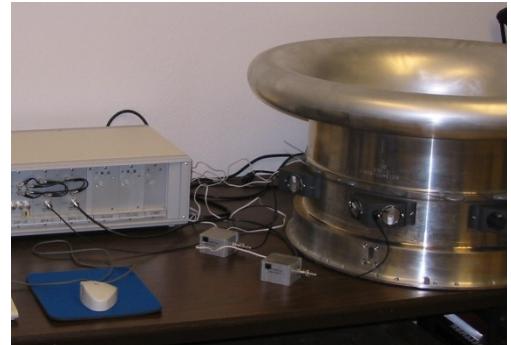
*Nielsen Engineering  
& Research, Inc.*

### **Reduced-Order Modeling**

NEAR's multidimensional response surface technology allows users to make powerful inferences from limited computational or experimental data. Examples of applications include intelligent data fusion and the creation of probabilistic metamodels usable in uncertainty and risk-based optimization. NEAR has considerable experience in designing reduced order models of unsteady system responses based on nonlinear indicial theory and the Volterra theory of nonlinear systems.

### **Flow-Related Sensors**

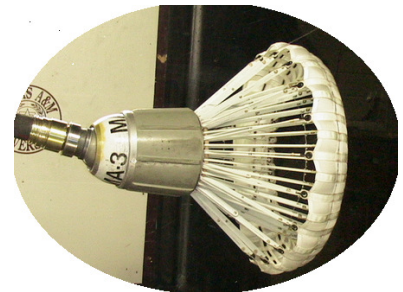
NEAR utilizes its expertise in aerodynamics and hardware development to create advanced flow sensors for industrial applications and for use in the development and testing of aerodynamic components and systems. One example of this is NEAR's ultrasonic vortex detection system which can simply and reliably detect, locate, and quantify unwanted axial vorticity that may be present in wind tunnels and turbine engine test cells.



### **Aerodynamic Hardware Solutions**

NEAR develops hardware solutions that take advantage of aerodynamic principles to enhance performance and functionality. One example of this is the work NEAR is conducting with the Air Force and Navy to develop advanced hose-and-drogue-style aerial refueling systems.

NEAR has incorporated innovative aerodynamic features to create a simple and robust controllable drogue which can actively stabilize the hose end to facilitate the refueling of manned and unmanned aircraft in even the worst weather conditions.







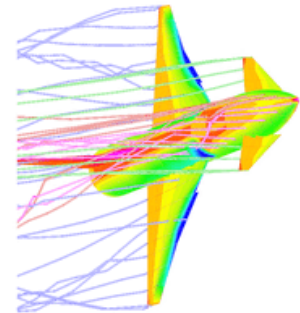
Nielsen Engineering  
& Research, Inc.

## Proprietary Software

(The codes listed below are among the tools used by NEAR to assist our customers. Standard and custom versions of these codes are available for license. For more information go to [www.nearinc.com](http://www.nearinc.com))

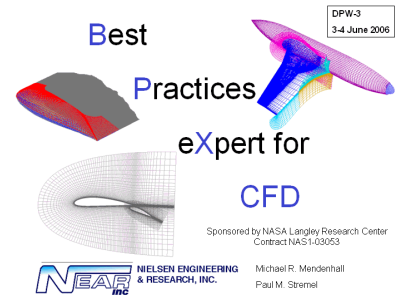
### Aerodynamic Software Licensing and Training

- Missile Aerodynamics: MISL3
- Detailed Missile Loads: MISDL
- Euler Solver: NEARZEUSIN
- Aircraft Store Separation and Carriage Loads Analysis: STRLNCH
- Unsteady Maneuvering Aerodynamics: SHAMAN
- Unsteady Hydrodynamic Analysis: SUBFLO\_2



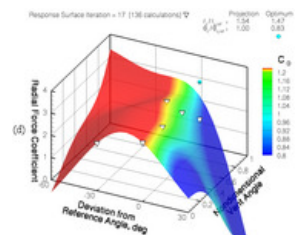
### Knowledge Systems Software

- Launch Vehicle Expert System: LVX
- Best Practices Expert System for CFD: BPX
- Rocket Sled Aerodynamics: RSX
- Intelligent Database Systems : DIXIE



### Mathematical Modeling Software

- Multidimensional Response Surface Technology: NEAR RS
- Risk-based optimization module: NEAR RS-opt
- Nonlinear Indicial Prediction System: NEAR IPS
- Volterra Kernel Identification System: NEAR VKS





*Nielsen Engineering  
& Research, Inc.*

## **Customers**

*(A sampling from our 40+ years of history)*

### **U. S. Government**

Air Force Research Laboratory (AFRL)  
Defense Advanced Research Projects Agency (DARPA)  
Holloman High Speed Test Track, Holloman AFB, NM  
National Aeronautics and Space Administration (NASA)  
Naval Air Warfare Center  
Naval Intelligence Agency  
Naval Undersea Warfare Center  
Office of Naval Research (ONR)  
US Army Aviation and Missile Command  
US Army Topographic Engineering Center

### **U. S. Private Industry**

Air Launch, LLC  
ATK  
BAE Systems  
Boeing  
Dynetics  
GE Aircraft Engines  
Raytheon Missiles Systems  
Lockheed - Martin  
Orbital Sciences Corporation  
Sargent Fletcher  
Space Exploration Technologies  
t/Space  
Zona Tech  
Panasonic Avionics Corp.  
General Dynamics, Electric Boat

### **International Organizations**

Aerodan Systems LTD, Israel  
Bodenseewerk GmbH, Germany  
DIEHL Munitions GmbH, Germany  
INTA, Spain  
Japan Defense Agency, Japan  
Kawasaki Heavy Industries, Japan  
Ministry of Defense, UK  
National Research Council, Canada  
Thales Air Defense, N. Ireland  
TNO/PML, The Netherlands  
Tubitak-Sage, Turkey  
OtoMelara, Italy  
QinetiQ, UK  
DLR, Braunschweig, Germany  
Kongsberg Defence  
& Aerospace AS, Norway



Nielsen Engineering & Research, Inc.

### Contracting Activities

NEAR routinely engages in business activities with organizations having complementary technical capabilities. Some representative contract relationships are shown below.



- LaRC – CFD Uncertainty Estimation and Quantification
- LaRC – Best Practices System for CFD Users
- ARC – Innovative Risk-Based Optimization



Shear Stress Sensor Development Partner



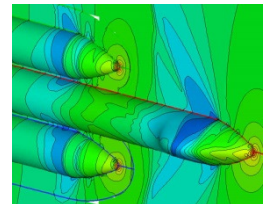
Advanced Refueling Drogue Development Partner



Configuration Aerodynamics Design Support



Large Payload Fairing Design



Engine Inlet Vortex Detection Sensor System



Paper Positioning Device Design and Development



PRODAS Software Aerodynamic Component



*Nielsen Engineering  
& Research, Inc.*

## ***History of NEAR***

Nielsen Engineering & Research (NEAR) was founded and incorporated in the State of California in 1966 by Dr. Jack N. Nielsen, a noted aerodynamics researcher, to perform applied research in the aerodynamics of flight vehicles. Originally, NEAR focused on the prediction of missile aerodynamic characteristics and store separation analyses, but since 1980, NEAR's technical interests have broadened to include basic and applied research in other areas of fluid mechanics and related technologies to better serve its customers. NEAR has always emphasized high quality analysis to promote better understanding of critical flow phenomena, technology development, and problem solving. The NEAR staff is well-known around the world for its analysis capabilities.

That the quality of the NEAR staff is recognized in the U.S. and abroad is demonstrated by the numerous invited lectures and papers they present worldwide. NEAR engineers have received nine NASA awards for "the creative development of a technical innovation" and NEAR staff members have served on numerous domestic and international technical committees, U. S. Government-organized review boards, and international advisory boards.

## ***Facilities***

NEAR is located in the heart of Silicon Valley near the intersection of three major freeways and within short driving distance of three major international airports. The company facility, cleared for Government work, has more than 4,600 square feet of office and technical library space. NEAR has networked computer resources to permit onsite computations of complex fluid flow problems using advanced CFD codes, thus reducing response time to its customers.





*Nielsen Engineering  
& Research, Inc.*

## *NEAR Management Team*

**Mr. Michael R. Mendenhall**, President and CEO, is the director of the applied aerodynamics research and the corporate memory preservation work at NEAR, and he has more than 40 years experience in aerodynamics. He has been Project Manager and Principal Investigator for aerodynamics on a number of commercial launch vehicle programs and on many government research contracts involving the prediction of the nonlinear aerodynamic characteristics of flight vehicles. He directs the CFD aerodynamic loads analysis of radome installations on commercial airliners as required for Special Type Certificate issuance by the FAA.

**Dr. Patrick H. Reisentel**, Vice President and Chief Scientist, supports basic and applied research activities at NEAR. He has over 20 years experience in fluid mechanics and aerodynamics. He is the developer of modeling techniques which have been applied to a diverse range of technical fields, including aeroservoelasticity, aeroacoustics, and electromagnetic pulse response of aircraft. More recently, he has been involved in the quantification of computational uncertainty, the development of multidimensional response surface technology, and their combined application to risk-based optimization.

**Dr. Daniel A. Pruzan**, Vice President and Director of Engineering, leads NEAR's efforts in the development and marketing of aerodynamic hardware solutions. Dr. Pruzan has been the Principal Investigator for the development of advanced aerial refueling drogues, flow-related sensing systems, adaptive submarine control surfaces, and aerodynamically enhanced production equipment for the printing industry. He has conducted research and development efforts for NASA, DoD, and many aerospace companies including Boeing and GE Aircraft Engines.

**Dr. Marnix F. E. Dillenius**, President Emeritus, joined NEAR in July 1969 and retired in 2008. He originated and made major contributions to analytical investigations of external store separation trajectory characteristics, supersonic wing loading theory, and detailed missile aerodynamic prediction methods. Dr. Dillenius has managed numerous projects including aerodynamic support for the NAVAIR AARGM missile, aerodynamic data bases for the dart dispense project of the ONR Mine and Obstacle Breaching Technology Program, and store separation analysis for the NAVAIR HSAD system. Dr. Dillenius is available to discuss the licensing of NEAR codes.

**More background information on this management team and the NEAR staff can be found on the NEAR web site [www.nearinc.com](http://www.nearinc.com)**



*Nielsen Engineering  
& Research, Inc.*

## **Contact Information**

Nielsen Engineering &  
Research, Inc.  
900 Lafayette St., Suite 600  
Santa Clara, CA 95050  
408-727-9457  
408-727-1428 fax  
[info@nearinc.com](mailto:info@nearinc.com)  
[www.nearinc.com](http://www.nearinc.com)



### **For Knowledge Management, CFD, and Applied Aerodynamics:**

Mr. Michael R. Mendenhall, President and CEO  
[mrm@nearinc.com](mailto:mrm@nearinc.com), 408-727-9457 x224

### **For Mathematical Modeling and Response Surface Technology:**

Dr. Patrick H. Reisenhel, Vice President and Chief Scientist  
[phr@nearinc.com](mailto:phr@nearinc.com), 408-727-9457 x225

### **For Aerodynamic Hardware Solutions:**

Dr. Daniel A. Pruzan, Vice President and Dir. of Engineering  
[dap@nearinc.com](mailto:dap@nearinc.com), 408-727-9457 x226

### **For Aerodynamic Software Licenses:**

Mr. Stanley C. Perkins, Jr., Senior Research Engineer  
[scp@nearinc.com](mailto:scp@nearinc.com), 408-727-9457 x230